

The Power of Illumination

www.bplusl.com

Nuance 6

Ballast for compact & linear fluorescent lamps



"A Match Box Size Power Pack"



General Specifications

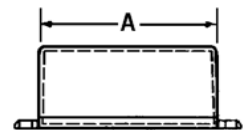
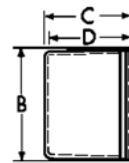
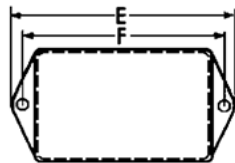
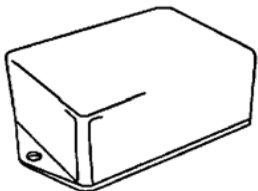
- ✓ Very small plastic casing
- ✓ Will power many type of lamps
- ✓ Input 120V, 277V or 347V 50/60Hz
- ✓ Instant start ballast
- ✓ High power factor >.9
- ✓ Flicker-free
- ✓ UL (Class P) outdoor Type 1
- ✓ End of lamp life (EOL) protection for 277V and 347V models only
- ✓ Remote mounting: 7.6m (25ft)
- ✓ Maximum casing temperature: 70°C ($\bullet t_c$)
- ✓ Minimum starting temperature: -10°C
- ✓ Ideal for infrequent on/off applications
- ✓ Can be relamped without power interruption
- ✓ Options available:
 - Casing format
 - RFI filter (120V only)
- ✓ Open cathode voltage: 415V

Ordering Information

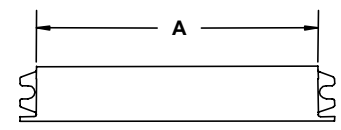
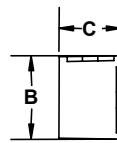
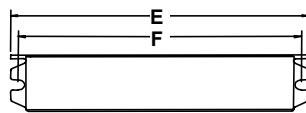
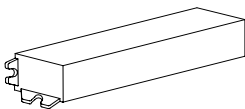
MODEL	INPUT	COMBINATION	MAXIMUM WATTAGE	CASING	WIRES POSITION	CASING FORMAT	OPTION
NU6	1=120V	1= 1 COMBINATION	28=28W	P= PLASTIC	S= SIDE	X= STANDARD S= SLIM	RFI= RFI FILTER (120V only)
	2=277V				C= CENTRE, BOTTOM		
	3=347V						
NU6	- 1	1	28	- P	S	X	-

Dimensions

Format X, white plastic



Format S, white plastic



FORMAT	A	B	C	D	E	F
X	2.00"	1.50"	1.00"	0.93"	2.88"	2.50"
S	3.76"	1.00"	0.78"	-----	4.20"	4.05"

Wiring Diagrams

Note : Use wires rated for 600VAC or higher for connections from ballast to lamp sockets

Note : Must join 2 red wires together for all NU6-1128 single lamp applications except T5 F8

	TWIN 5, 7 9, 11 13, 18 & 24W	TRIPLE / QUAD 10, 13 18, 26W	T5 F8	T5 F4, F6 F13, F14 F21, F28 T8 F13, F14 F15, F16 F17, F18 & F25 T12 F14, F15 & F20	2D 10, 16 21, 28W	TWIN 5, 7 9, 11W	TRIPLE / QUAD 10, 13W	T5 F4, F6 F8, F13 & F14 T8 F13 & F14 T12 F14	2D 10W
120V 									
120V 									
120V 									
277V / 347V 									

Warranty

3 years from delivery date for:
Nuance VI

Special Notes

- 1) NU6-1128 (120V) models are not equipped with end of lamp life (EOL) sensing circuit. The use of lamps with integral EOL is recommended when using 120V models with T4 or smaller lamps. Lamps without EOL protection may char and smoke at EOL. B+L will not be liable for any costs resulting from non-EOL lamps.
- 2) NU6 ballasts are instant start type. For optimal lamp life, use lamps rated for instant start ballast. Rapid start lamps may experience shorter life. B+L will not be liable for any costs resulting from shorten lamp life when using lamps that are not recommended.
- 3) NU6 ballasts do not provide cathode filament heating current during operation. For optimal lamp life, it is recommended that only lamps rated for operation without cathode current be used with NU6 ballasts

**1131 Autoroute Laval W.
Laval (Quebec)
Canada, H7L 3W3
Tel.: (450) 663-7884
1-800-361-1400
Fax.: (450) 663-7638
www.bplusl.com
info@bplusl.com**

