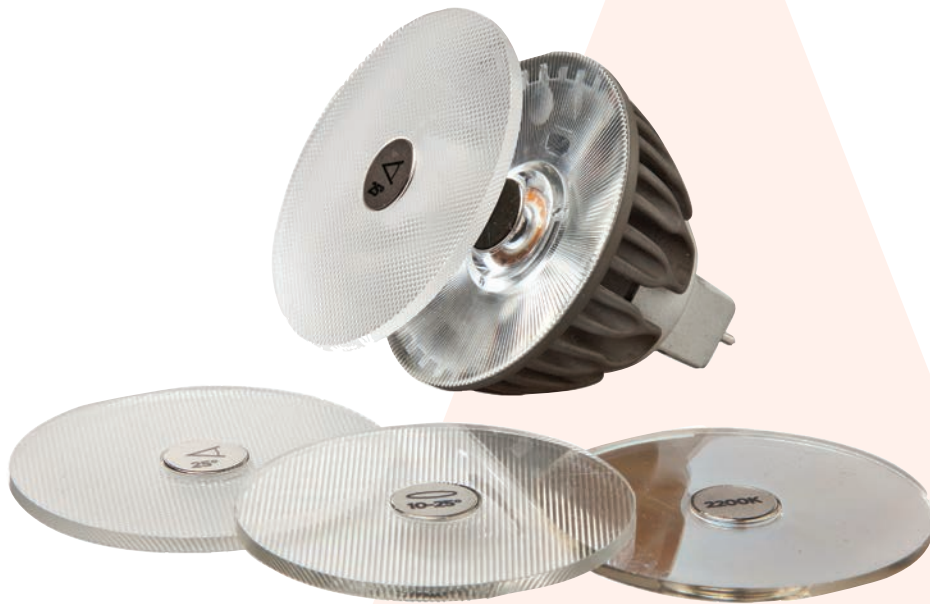


SORAA® SNAP SYSTEM LED MR16 + ACCESSORIES



- World's First 10° Single Source LED MR16
- CRI 80 or 95 Full Spectrum
- Magnetic Self Centering
- Fits All Fixtures
- Multiple Stackable Accessories
- Any Beam Angle
- Ellipse, Color Filters, Louvers
- Dimmable

FREE YOUR IMAGINATION WITH UNLIMITED DESIGN POSSIBILITIES

- **Achieve all beam distributions or colors with one lamp SKU**
- **Shorten design, specification, installation, and sales cycles**
- **Reduce inventory costs**
- **Unprecedented design flexibility**
- **All standard distributions, colors**
- **Formerly impossible distributions such as flat tops**
- **Magnet automatically self centers accessories without fasteners or tools**
- **Compatible with all standard fixtures**
- **No bulky and costly fixtures or adaptors required**
- **Simple installation without need for removal of lamp**
- **Works in unventilated fully sealed fixtures**

Accessories are an important tool in lighting designers' palettes which allows them to fine tune lighting scenes by creating dedicated light distributions and colors. They also give designers the flexibility to optimize a design on site, with any lamp beam spread. Examples of typical accessories include: hex-louvers and snoots to reduce glare; grates to create linear light patterns; and gels for tinted effects.

Because of their high operating temperature, halogen lamps require accessories made of heavy glass or metal and bulky attachment mechanisms: this limits fixture choices and aesthetic possibilities. Many LED directional lamps are incompatible with accessories because they use multiple LED sources - "shower heads", have non-standard dimensions, or have operating temperature requirements significantly lower than halogen sources.

The Soraa Snap System is the first LED lamp/accessory solution that is optimized to work as an integrated system. Based on high brightness single source GaN on GaN™ LED technology, it completely redefines accessory application. The effects that can be achieved are similar to what can be done with halogen sources, but are enabled by a relatively low operating temperature and groundbreaking optical design, materials, and methods of attachment. The system's self-centering magnetic interconnect system makes using accessories completely user friendly, and opens up possibilities for accessories to a much wider range of fixtures than ever before. Also, the relatively low temperature of the Soraa MR16 Snap System lamps mean that new accessory materials, such as advanced polymer films, can be used for beam and color control in ways never before possible.



reddot design award
winner 2013



RoHS

SORAA LED MR16 NARROW SPOT

Soraa's LED MR16 10° narrow spot is the basis for the Snap System. Powered by Soraa's GaN on GaN™ technology, Soraa LED MR16 lamps are the first to match and exceed 65W halogen MR16 performance, and with their unique single source optics deliver the best beam definition and crisp shadows available in directional light sources.

PERFORMANCE

Up to 7700 cd / 75W Halogen Equivalent
10W, saving 55W of power
CBCP exceeds standard halogen lamps
Single light source
Single crisp shadow
Dimmable to 20%
Power Factor: 0.93
12V (10.8 min, 13.2 max)

COLOR

White point accuracy within 3 SDCM
Rich saturated color rendering
Excellent color stability

OPTIMIZED FORM

ANSI standard MR16 form factor:
1.96" (50mm) W x 1.86" (47.6mm) H
Compatible with standard fixtures
Weight: 40g
Proprietary fanless aluminum design
provides superior thermal dissipation

HIGHLY COMPATIBLE

Works with magnetic and electronic
transformers and dimmers (see complete
list at www.soraa.com)
UL and CUL listed for use with 12VAC NEC
Class 1 and Class 2 systems
Lightweight, comparable to typical
halogen lamps

LONG LIFE, LOW MAINTENANCE

Lifetime of 35,000 hours
Three year warranty

ENERGY EFFICIENT

Saves over 85% of energy compared to
standard halogen lamps
Typical payback of one year or less

INTENDED USE AND APPLICATIONS

LED retrofit lamp to replace 12VAC
halogen MR16 lamps for use in outdoor
sealed or non-ventilated, indoor sealed or
non-ventilated, or applications with glass
lenses

Not for use in Emergency Fixtures or Exit
Signs

Operating Temperature: Minimum -40°C
-50°C (ambient); Typical: 80-110°C (base);
Maximum: 120°C (base)

CERTIFICATIONS

UL, CUL for 12VAC NEC Class 1 and Class
2 systems, FCC 47 CFR Part 15 and Part 18
(EMI), RoHS, CE, C-tick

12VAC



2700K

3000K

CRI
>80

CRI
>95



DIM



LED MR16 LAMP SPECIFICATIONS*

Part Number	Product Code	Beam	Field	CCT	CRI/R9	CBCP	Watts	Voltage	Halogen Equivalent
MR16-65-B01-12-830-10	00265	10°	20°	3000K	80/>0	7700	10	12VAC	65W
MR16-65-B01-12-930-10	00269	10°	20°	3000K	95/95	6000	10	12VAC	50W
MR16-65-B01-12-827-10	00267	10°	20°	2700K	80/>0	7500	10	12VAC	65W
MR16-50-B01-12-927-10	00271	10°	20°	2700K	95/95	5700	10	12VAC	50W

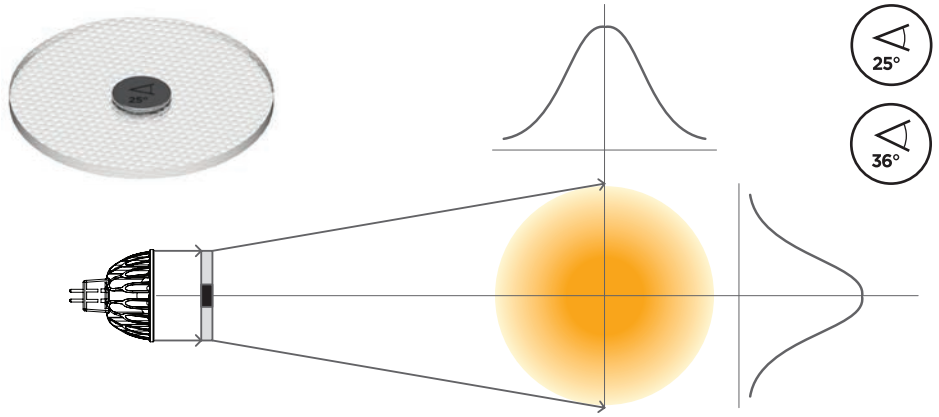
*at stable warm operating conditions (25°C ambient)

BEAM SPREADER

Use in any application where reducing the number of beam angle SKUs is required.

Reduces inventory costs.
Shortens specification, design, sales cycles.
Flexibility up to the time of installation.

Beam	Part Number
25°	AC-GC-2525-00-00
36°	AC-GC-3636-00-00

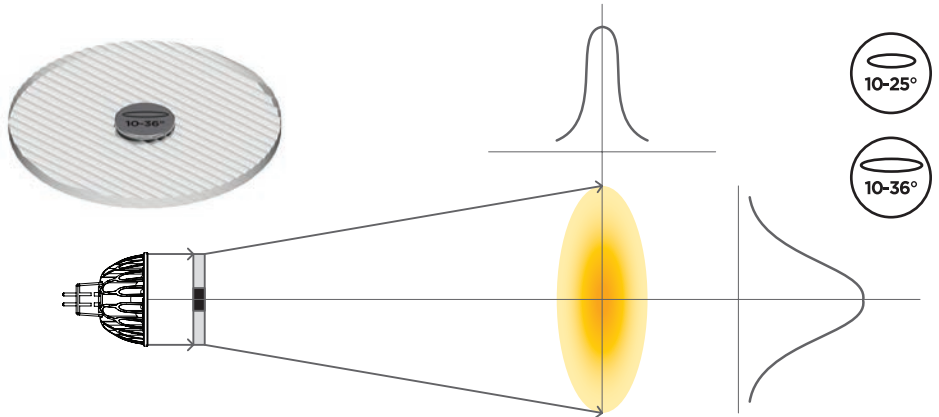


LINEAR LENS

Use in wall washes and illuminating asymmetric objects.

Reduces quantity of light fixtures.
Reduce spill illumination of target objects.

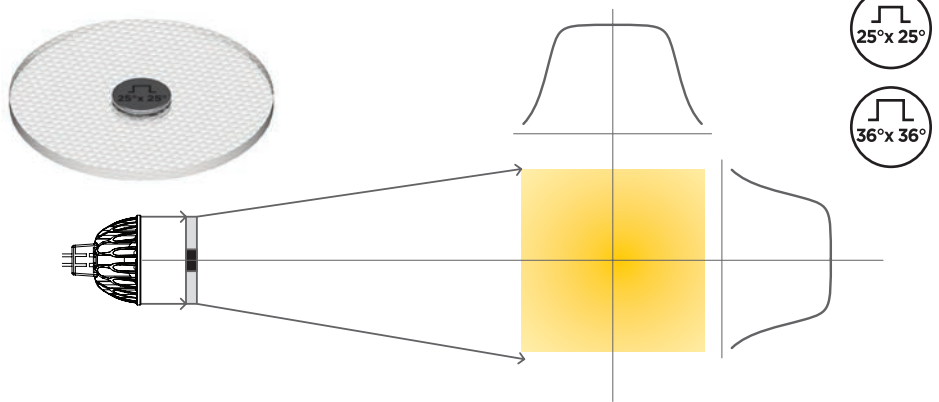
Beam	Part Number
10° x 25°	AC-GE-1025-00-00
10° x 36°	AC-GE-1036-00-00



FLAT TOP

Provides even illumination center to edge.
Eliminates video camera saturation, for use in applications such as critical video surveillance.

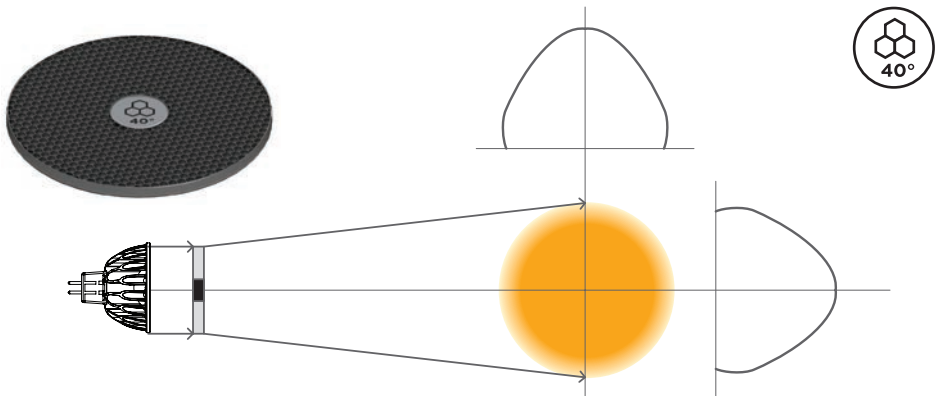
Beam	Part Number
25° x 25°	AC-FR-2525-00-00
36° x 36°	AC-FR-3636-00-00



LOUVERS

Eliminates high angle glare, making light beams disappear in downlight applications.

Cutoff Angle	Part Number
40°	AC-LU-4040-00-00

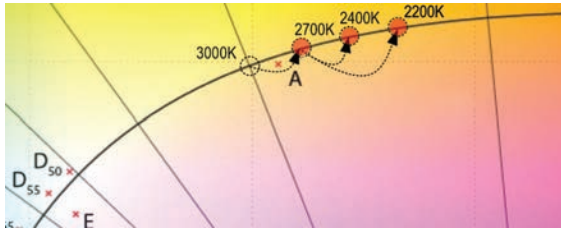
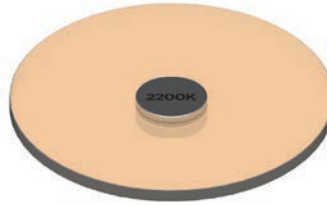
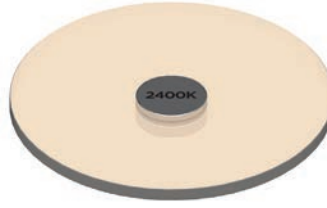


CCT SHIFTER

Use in hospitality and restaurant application to simulate warm dimming
Create custom colors for festive occasions or brand identity

Single Lamp SKU can be used for multiple color temperatures

CCT Shift	Part Number
3000K > 2700K	AC-CC-3027-95-00
3000K > 2400K	AC-CC-3024-95-00
3000K > 2200K	AC-CC-3022-95-00



Preliminary specifications and product descriptions.

Information and specifications subject to change. Rev D D-110143 4.18.13

Soraa Inc. 6500 Kaiser Drive, Fremont, CA 94555
855 GO-SORAA / 855 467-6722 www.soraa.com